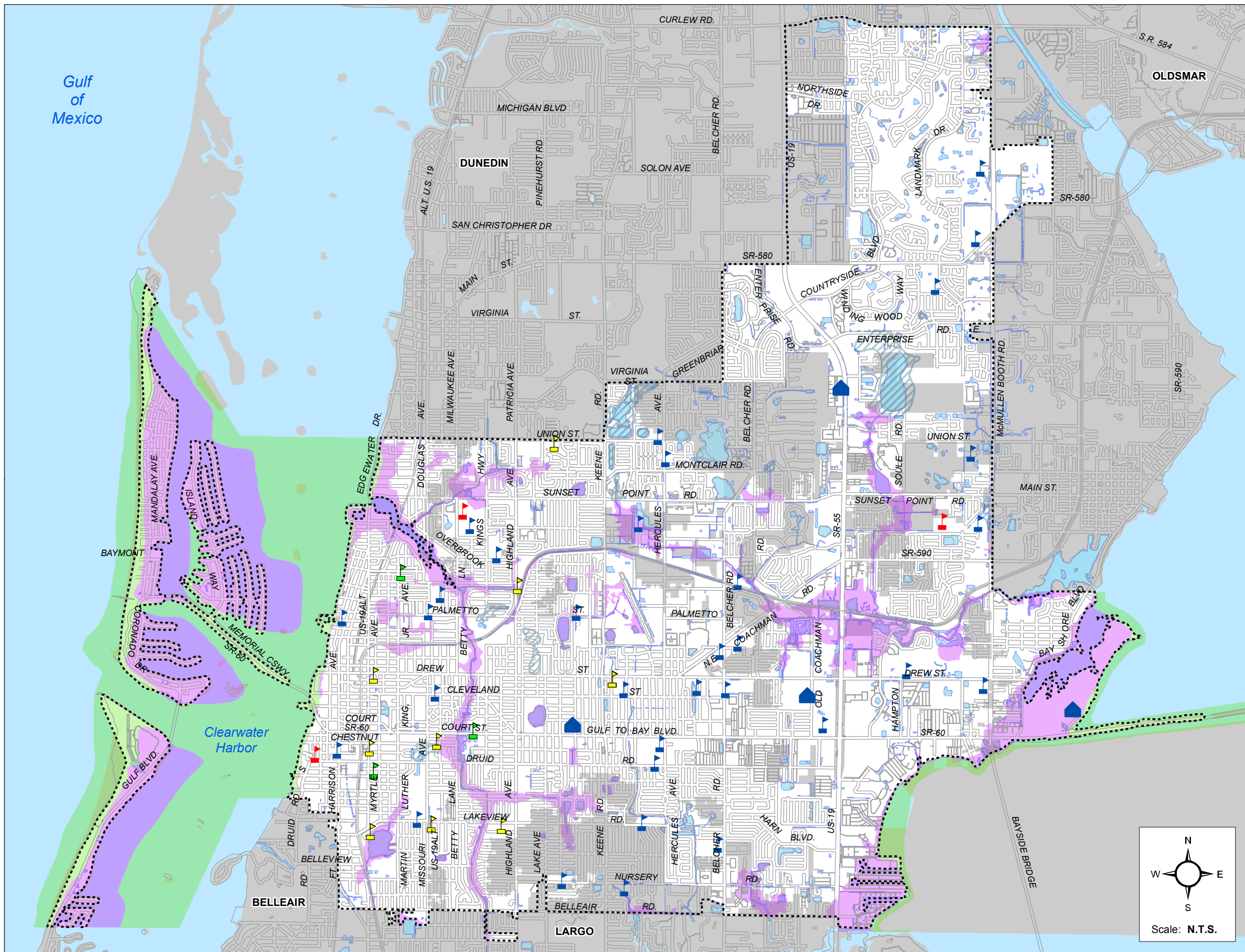


City of Clearwater Floodplain Management Plan 2009



Public / Private School Facilities

Figure 16

Date: 5/1/2009

Source: Clearwater Gas System / Apr 2009

Legend

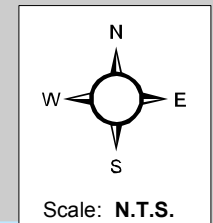
Public and Private Clearwater Schools

- ACADEMY
- SCHOOL
- COLLEGE/UNIVERSITY
- OTHER
- SPECIAL NEEDS

FEMA SFHA (Floodplain)

ZONE

- A
- AE
- AH (No Occurance within Clearwater)
- VE
- Ponds, Lakes, Rivers, Creeks
- Clearwater Landmass
- Outside Clearwater City Limits



Prepared by:
 Engineering Department
 Geographic Technology Division
 100 S. Myrtle Ave, Clearwater, FL 33756
 Ph: (727)562-4750, Fax: (727)526-4755
www.MyClearwater.com

Disclaimer:
 Public information data is furnished by the City of Clearwater Engineering Department, and must be accepted and used by the recipient with the understanding that the data received was collected for the purpose of developing a graphic infrastructure inventory. As such, the City of Clearwater makes no warranties, expressed or implied, concerning the accuracy, completeness, reliability, or suitability of this data for any other particular use. Furthermore, the City of Clearwater assumes no liability whatsoever associated with the use or misuse of such data.