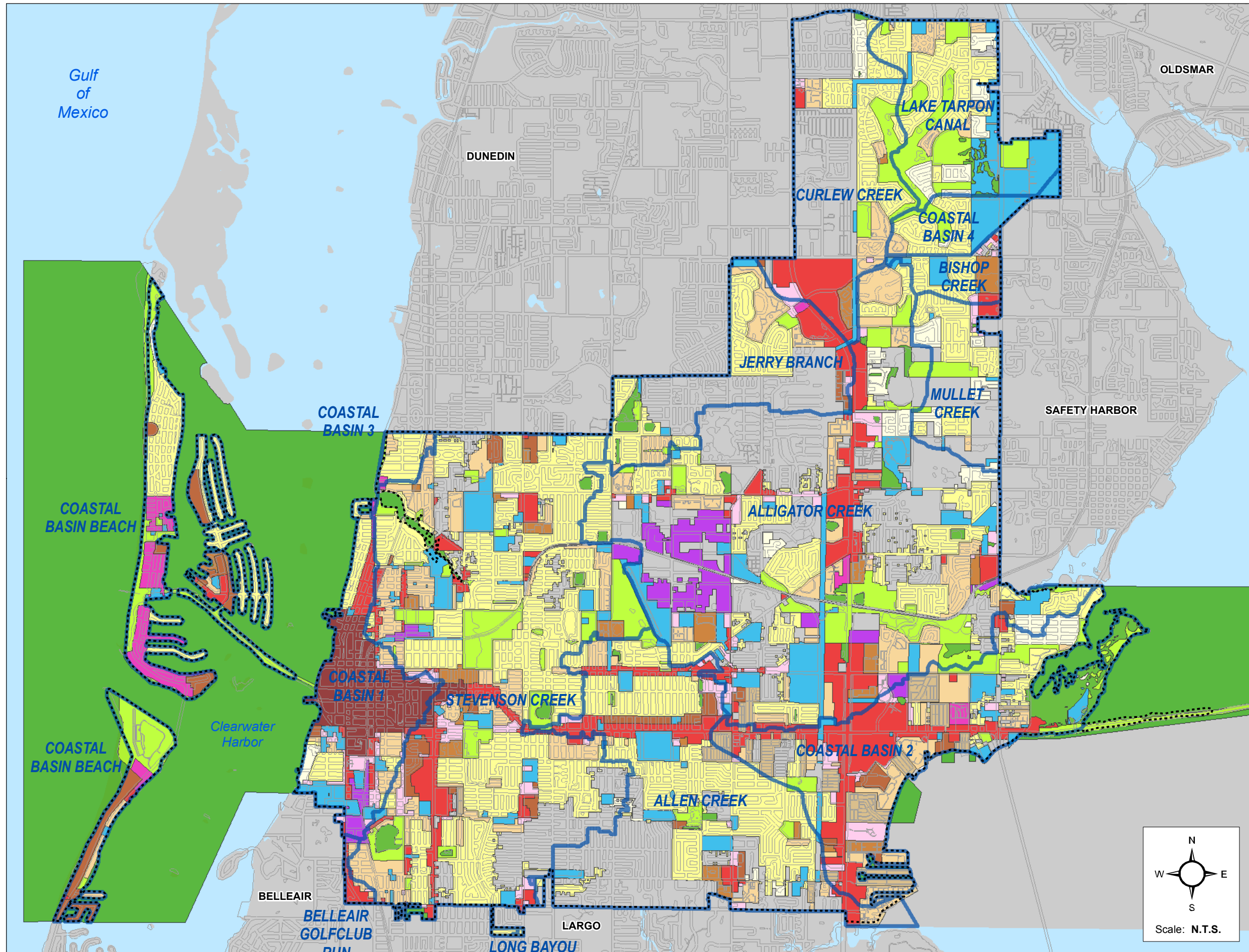


# City of Clearwater Floodplain Management Plan 2009



## Clearwater Zoning Boundaries and Drainage Basins

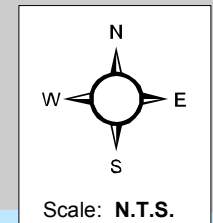
Figure 4

Date: 4/17/2009

Source: Clearwater Planning Dept / June 2008

### Legend

- Drainage Basins within Clearwater
- Clearwater Zoning Districts**
- LDR - LOW DENSITY RESIDENTIAL
- LMDR - LOW MEDIUM DENSITY RESIDENTIAL
- MDR - MEDIUM DENSITY RESIDENTIAL
- MHDR - MEDIUM HIGH DENSITY RESIDENTIAL
- HDR - HIGH DENSITY RESIDENTIAL
- MHP - MOBILE HOME PARK
- C - COMMERCIAL
- T - TOURIST
- D - DOWNTOWN
- O - OFFICE
- I - INSTITUTIONAL
- IRT - INDUSTRIAL, RESEARCH, TECHNOLOGY
- OSR - OPEN SPACE, RECREATION
- P - PRESERVATION
- Clearwater Landmass
- Outside Clearwater City Limits



Prepared by:  
 Engineering Department  
 Geographic Technology Division  
 100 S. Myrtle Ave, Clearwater, FL 33756  
 Ph: (727)562-4750, Fax: (727)526-4755  
[www.MyClearwater.com](http://www.MyClearwater.com)

*Disclaimer:*  
 Public information data is furnished by the City of Clearwater Engineering Department, and must be accepted and used by the recipient with the understanding that the data received was collected for the purpose of developing a graphic infrastructure inventory. As such, the City of Clearwater makes no warranties, expressed or implied, concerning the accuracy, completeness, reliability, or suitability of this data for any other particular use. Furthermore, the City of Clearwater assumes no liability whatsoever associated with the use or misuse of such data.