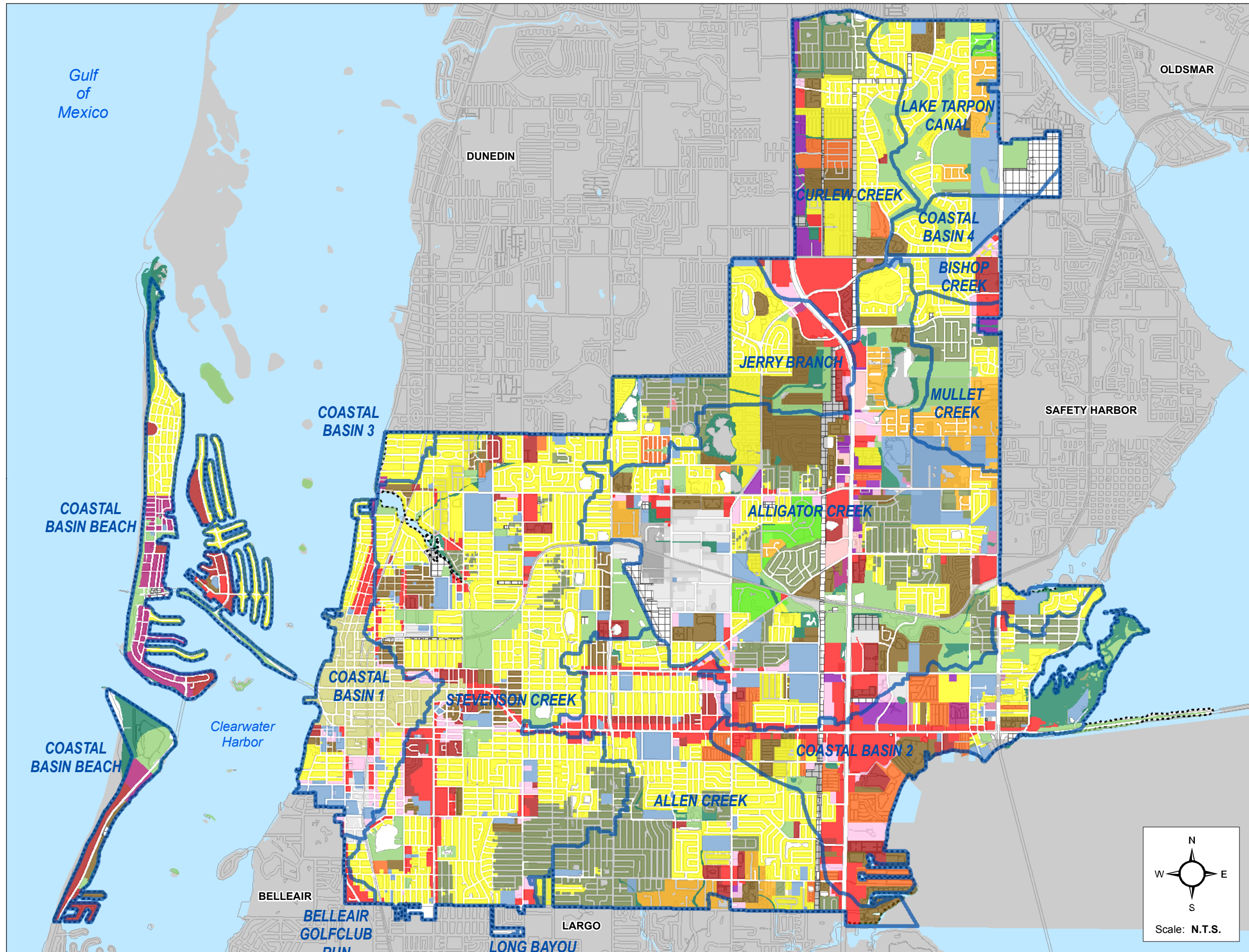


# City of Clearwater Floodplain Management Plan 2009



## Pinellas County Future Land Use Boundaries and Drainage Basins

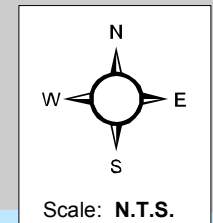
Figure 5

Date: 4/17/2009

Source: Pinellas Planning Council / Jun 2007

### Legend

- Drainage Basins within Clearwater
- Residential and Mixed Use
- RE - RESIDENTIAL ESTATE
- RS - RESIDENTIAL SUBURBAN
- RL - RESIDENTIAL LOW
- RU - RESIDENTIAL URBAN
- RLM - RESIDENTIAL LOW MEDIUM
- RM - RESIDENTIAL MEDIUM
- RH - RESIDENTIAL HIGH
- R/OL - RESIDENTIAL/OFFICE LIMITED
- R/OG - RESIDENTIAL/OFFICE GENERAL
- R/O/R - RESIDENTIAL/OFFICE/RETAIL
- RFH - RESORT FACILITIES HIGH
- CN - COMMERCIAL NEIGHBORHOOD
- CL - COMMERCIAL LIMITED
- CG - COMMERCIAL GENERAL
- CBD - CENTRAL BUSINESS DISTRICT
- IL - INDUSTRIAL LIMITED
- IG - INDUSTRIAL GENERAL
- P - PRESERVATION
- R/OS - RECREATION/OPEN SPACE
- INS - INSTITUTIONAL
- T/U - TRANSPORTATION/UTILITY
- CRD - COMMUNITY REDEVELOPMENT DISTRICT
- Clearwater Landmass
- Outside Clearwater City Limits



Prepared by:  
**City of Clearwater**  
 Engineering Department  
 Geographic Technology Division  
 100 S. Myrtle Ave, Clearwater, FL 33756  
 Ph: (727)562-4750, Fax: (727)526-4755  
[www.MyClearwater.com](http://www.MyClearwater.com)

*Disclaimer:*  
 Public information data is furnished by the City of Clearwater Engineering Department, and must be accepted and used by the recipient with the understanding that the data received was collected for the purpose of developing a graphic infrastructure inventory. As such, the City of Clearwater makes no warranties, expressed or implied, concerning the accuracy, completeness, reliability, or suitability of this data for any other particular use. Furthermore, the City of Clearwater assumes no liability whatsoever associated with the use or misuse of such data.