

CRA WORKFORCE HOUSING
205 SOUTH MARTIN LUTHER KING AVE
CLEARWATER, FL 33609

THESE DRAWINGS AND PLANS, ANY REPRODUCTION THEREOF, AND ANY CAD OR ELECTRONIC FILE OF THESE DRAWINGS AND PLANS HEREAFTER "PLANS" ARE THE SOLE AND EXCLUSIVE PROPERTY OF BDG ARCHITECTS AND MAY NOT BE REPRODUCED, PUBLISHED, INCORPORATED OR USED IN ANY WAY WITHOUT THE EXPRESS WRITTEN PERMISSION OF BDG ARCHITECTS. USE OF THESE PLANS FOR CONSTRUCTION SHALL BE CONSIDERED ACCEPTANCE OF THE TERMS CONTAINED HEREIN AND THE WRITTEN APPROVAL OF BDG ARCHITECTS. ANY CHANGES TO THESE PLANS, REGARDLESS OF HOW MINOR, WITHOUT THE EXPRESS WRITTEN APPROVAL OF BDG ARCHITECTS, MAY CONSTITUTE NEGLIGENCE OR OTHER PROFESSIONAL MISFEASANCE. ANY CONSTRUCTION EXECUTED FROM THESE PLANS WITHOUT THE EXPRESS WRITTEN APPROVAL OF BDG ARCHITECTS OR ANY CHANGE IN THE SCOPE, SERIAL OR NUMBER OF THESE PLANS FOR ANY REASON, BY ANY PERSON OTHER THAN BDG ARCHITECTS SHALL AUTOMATICALLY VOID ANY WARRANTIES OR CONDITIONS OF SALE. BDG ARCHITECTS MAY HAVE ON THE PROJECT, AND RESULT IN THE FULL AND COMPLETE RELEASE OF BDG ARCHITECTS FROM ANY LIABILITY, CLAIMS OR DAMAGES INCLUDING ERRORS AND OMISSIONS ARISING OUT OF OR RELATED TO THE PLANS, ANY DISCREPANCIES OR CONFLICTS IN THE PLANS SHALL BE REFERRED IMMEDIATELY TO BDG ARCHITECTS FOR CLARIFICATION. NO WORK SHALL BE PERFORMED BY ANY CONTRACTOR OR TRADES PERSON UNLESS IT IS IN ACCORDANCE WITH THE PLANS AND THE CONTRACT. THE CONTRACTOR IS RESPONSIBLE FOR THE COORDINATION, SCHEDULING AND CONFORMANCE OF ITS WORK AND ALL WORK PERFORMED BY SUBCONTRACTORS OR OTHER TRADES WITH THE DESIGN DOCUMENTS.

SEAL

NOT FOR CONSTRUCTION

Architect of Record:
Brian D. Hammond, AIA, LEED, AP
FL License # AR0009919

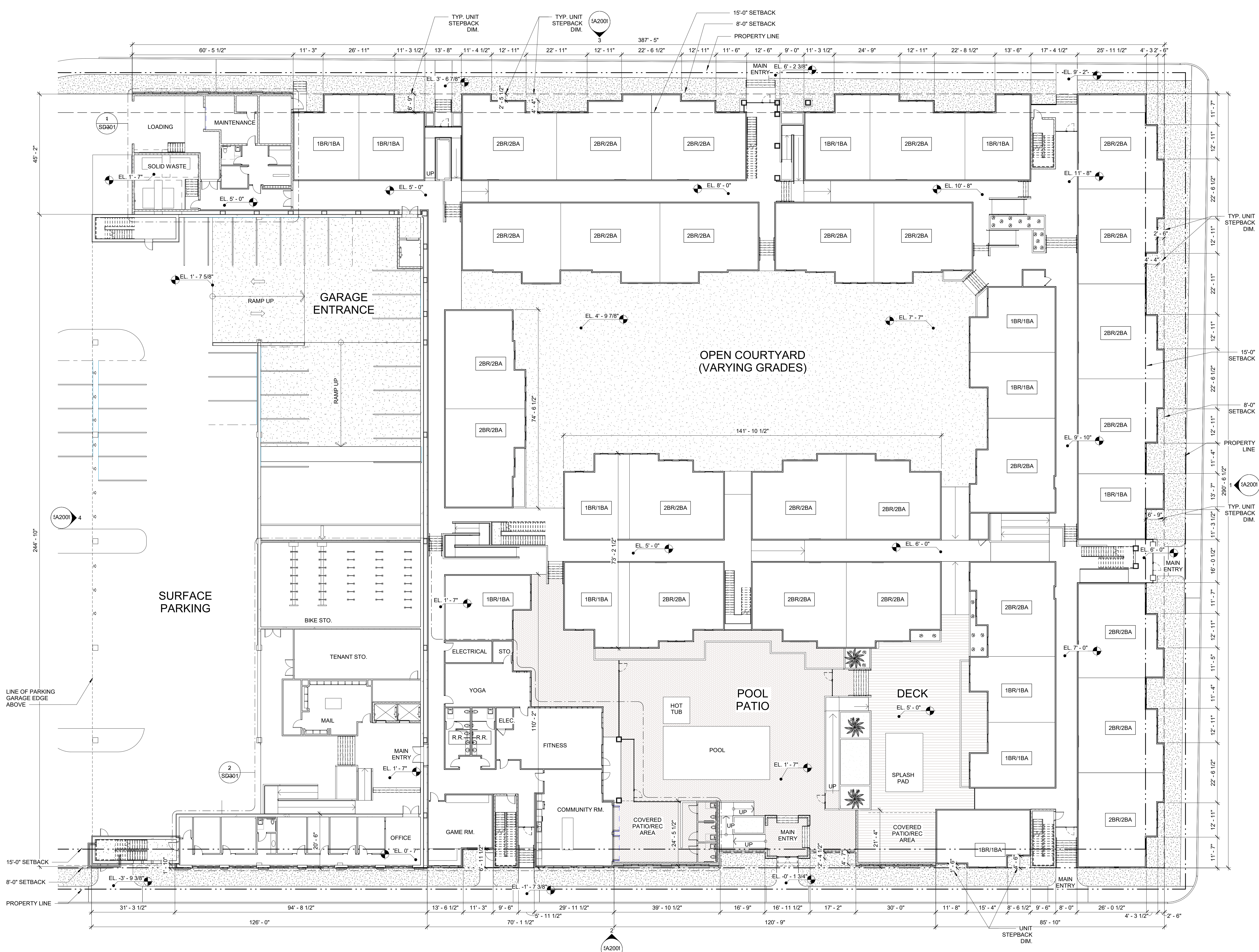
ISSUE	BY	DATE	DESCRIPTION

PROJECT INFORMATION BLOCK	
JOB #	Project Number
DATE	Issue Date
DRAWN BY:	Author
CHECKED BY:	Checker

SHEET TITLE

SD GROUND FLOOR PLAN

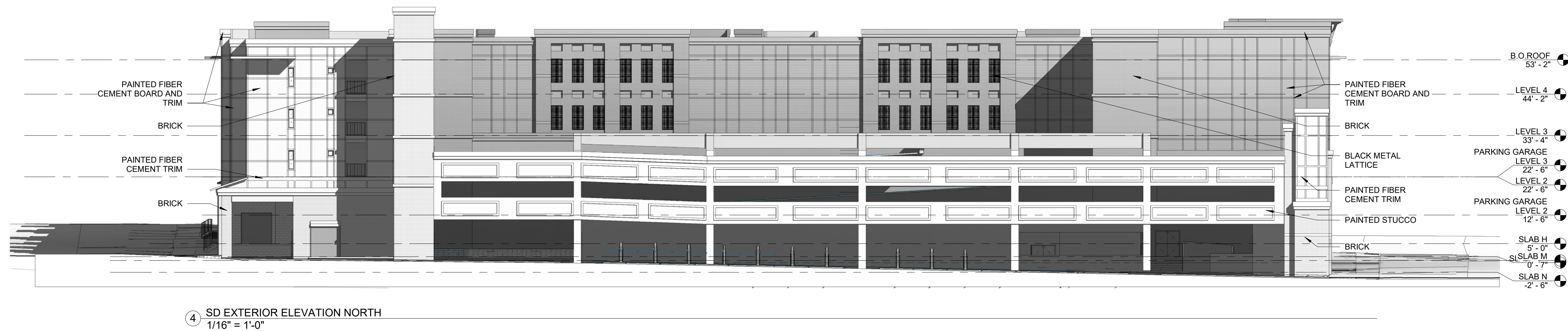
SHEET NUMBER



1 SD FLOOR PLAN - GROUND FLOOR
1/16" = 1'-0"

ELEVATION LEGEND

LOCATIONS OF DEVIATIONS OF FINISH FLOOR ELEVATIONS



THESE DRAWINGS AND PLANS, ANY REPRODUCTION THEREOF, AND ANY CAD OR ELECTRONIC FILE OF THESE DRAWINGS AND PLANS HEREINAFTER ("FILES") ARE THE SOLE AND EXCLUSIVE PROPERTY OF BDG ARCHITECTS AND MAY NOT BE REPRODUCED, PUBLISHED, INCORPORATED OR USED IN ANY WAY WITHOUT THE EXPRESS WRITTEN PERMISSION OF BDG ARCHITECTS. USE OF THESE PLANS FOR CONSTRUCTION SHALL BE CONSIDERED ACCEPTANCE OF THE TERMS CONTAINED HEREIN AND THE WRITTEN APPROVAL OF BDG ARCHITECTS. ANY CHANGES TO THESE PLANS, REGARDLESS OF HOW MADE, WITHOUT THE EXPRESS WRITTEN APPROVAL OF BDG ARCHITECTS, MAY CONSTITUTE NEGLIGENCE OR OTHER PROFESSIONAL LIABILITY. ANY CONSTRUCTION EXECUTED FROM THESE PLANS WITHOUT THE EXPRESS WRITTEN APPROVAL OF BDG ARCHITECTS, OR ANY CHANGE IN THE SCOPE, SEQUENCE OR METHOD OF THESE PLANS FOR ANY REASON, BY ANY PERSON OTHER THAN BDG ARCHITECTS SHALL AUTOMATICALLY RELEASE BDG ARCHITECTS FROM ANY LIABILITY, CLAIMS OR DAMAGES INCLUDING ERRORS AND OMISSIONS ARISING OUT OF OR RELATED TO THESE PLANS. ANY DISCREPANCIES OR CONFLICTS IN THESE PLANS SHALL BE REFERRED IMMEDIATELY TO BDG ARCHITECTS FOR CLARIFICATION PRIOR TO COMMENCING WITH THE WORK. FAILURE TO REFER DISCREPANCIES OR CONFLICTS TO BDG ARCHITECTS PRIOR TO COMMENCING WORK SHALL RESULT IN THE WAIVER OF ANY CLAIMS OR DAMAGES ASSOCIATED WITH THE DISCREPANCIES OR CONFLICTS. THE CONTRIBUTOR IS RESPONSIBLE FOR THE COORDINATION, SCHEDULING AND PERFORMANCE OF ITS WORK AND ALL WORK PERFORMED BY SUBCONTRACTORS OR OTHER TRADES WITH THE DESIGN DOCUMENTS.

SEAL
 NOT FOR CONSTRUCTION

Architect of Record:
 Brian D. Hammond, AIA, LEED, AP
 FL License # AR0009919

ISSUE	BY	DATE	DESCRIPTION

PROJECT INFORMATION BLOCK

JOB #	Project Number
DATE	Issue Date
DRAWN BY:	Author
CHECKED BY:	Checker

SHEET TITLE
SD EXTERIOR ELEVATIONS

SHEET NUMBER
SD200



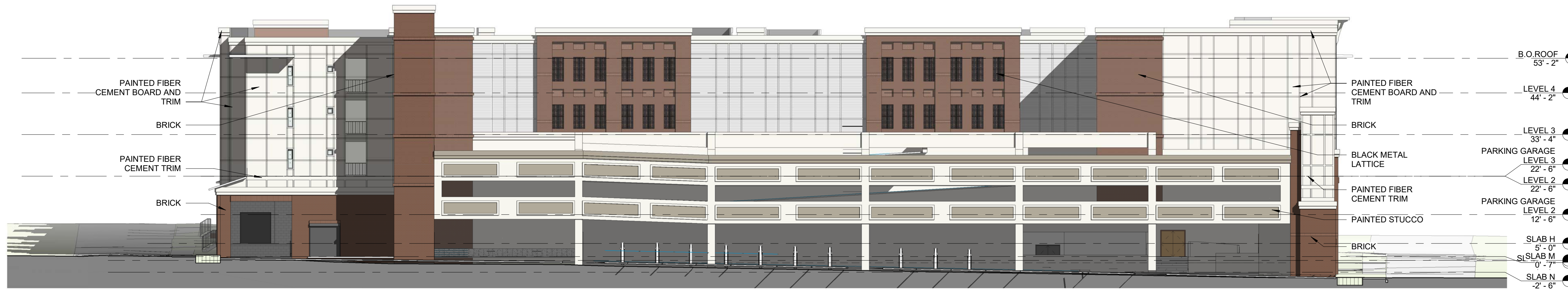
① SD EXTERIOR ELEVATION SOUTH (Colored)
1/16" = 1'-0"



② SD EXTERIOR ELEVATION EAST (Colored)
1/16" = 1'-0"



③ SD EXTERIOR ELEVATION WEST (Colored)
1/16" = 1'-0"



④ SD EXTERIOR ELEVATION NORTH (Colored)
1/16" = 1'-0"

THESE DRAWINGS AND PLANS, ANY REPRODUCTION THEREOF, AND ANY CAD OR ELECTRONIC FILE OF THESE DRAWINGS AND PLANS HEREINAFTER ("FILES") ARE THE SOLE AND EXCLUSIVE PROPERTY OF BDG ARCHITECTS AND MAY NOT BE REPRODUCED, PUBLISHED, MOVED OR USED IN ANY WAY WITHOUT THE EXPRESS WRITTEN PERMISSION OF BDG ARCHITECTS. USE OF THESE PLANS FOR CONSTRUCTION SHALL BE CONSIDERED ACCEPTANCE OF THE TERMS CONTAINED HEREIN AND THE WRITTEN APPROVAL OF BDG ARCHITECTS. ANY CHANGES TO THESE PLANS, REGARDLESS OF HOW MINOR, WITHOUT THE EXPRESS WRITTEN APPROVAL OF BDG ARCHITECTS, MAY CONSTITUTE A BREACH OF THESE PLANS OR ANY REASON, BY ANY PERSON OTHER THAN BDG ARCHITECTS, SHALL AUTOMATICALLY VOID ANY DESIGNATED ORGANIZATION'S DESIGN. ARCHITECTS MAY HAVE ON THE PROJECT, AND RESULT IN THE FULL AND COMPLETE RELEASE OF BDG ARCHITECTS FROM ANY LIABILITY, CLAIMS OR DAMAGES INCLUDING ERRORS AND OMISSIONS ARISING OUT OF OR RELATED TO THE PLANS, ANY DISCREPANCIES OR CONFLICTS IN THE PLANS SHALL BE REFERRED IMMEDIATELY TO BDG ARCHITECTS FOR CLARIFICATION PRIOR TO CONTINUING WITH THE WORK. FAILURE TO REFER DISCREPANCIES OR CONFLICTS TO BDG ARCHITECTS PRIOR TO PERFORMING WORK SHALL RESULT IN THE WAIVER OF ANY CLAIMS OR DAMAGES ASSOCIATED WITH THE DISCREPANCIES OR CONFLICTS. THE CONTRIBUTION IS RESPONSIBLE FOR THE COORDINATION, SCHEDULING AND CONFORMANCE OF ITS WORK AND ALL WORK PERFORMED BY SUBCONTRACTORS OR OTHER TRADES WITH THE DESIGN DOCUMENTS.

SEAL
NOT FOR CONSTRUCTION

Architect of Record:
Brian D. Hammond, AIA, LEED, AP
FL License # AR0009919

ISSUE	BY	DATE	DESCRIPTION

PROJECT INFORMATION BLOCK	
JOB #	Project Number
DATE:	Issue Date
DRAWN BY:	Author
CHECKED BY:	Checker

SHEET TITLE
SD COLORED EXTERIOR ELEVATIONS

SHEET NUMBER
SD201

CRA WORKFORCE HOUSING
205 SOUTH MARTIN LUTHER KING AVE
CLEARWATER, FL 33609

THESE DRAWINGS AND PLANS, ANY REPRODUCTION THEREOF, AND ANY CAD OR ELECTRONIC FILE OF THESE DRAWINGS AND PLANS HEREAFTER ("FILES") ARE THE SOLE AND EXCLUSIVE PROPRIETARY PROPERTY OF BDG ARCHITECTS AND MAY NOT BE REPRODUCED, PUBLISHED, INCORPORATED OR USED IN ANY WAY WITHOUT THE EXPRESS WRITTEN PERMISSION OF BDG ARCHITECTS. USE OF THESE DRAWINGS FOR CONSTRUCTION SHALL BE CONSIDERED ACCEPTANCE OF THE TERMS CONTAINED HEREIN AND THE SURETY AND CONTRACTORS OF THE OWNER. THE PLANS SHALL NOT BE SCALED OR MODIFIED FOR ANY PURPOSE WITHOUT THE EXPRESS WRITTEN APPROVAL OF BDG ARCHITECTS. ANY CHANGES TO THESE PLANS, REGARDLESS OF HOW MINOR, WITHOUT THE EXPRESS WRITTEN APPROVAL OF BDG ARCHITECTS, MAY CONSTITUTE DEVIATION FROM THESE PLANS WITHOUT THE EXPRESS WRITTEN APPROVAL OF BDG ARCHITECTS, OR ANY CHANGE IN THE SCOPE, SERIAL OR ORDER OF THESE PLANS FOR ANY REASON. BY ANY PERSON OTHER THAN BDG ARCHITECTS, SHALL AUTOMATICALLY BE DEEMED TO BE A WAIVER OF ANY CLAIMS OR DAMAGES INCLUDING ERRORS AND OMISSIONS ARISING OUT OF OR RELATED TO THE PLANS, ANY DISCREPANCIES OR CONFLICTS IN THE PLANS SHALL BE REFERRED IMMEDIATELY TO BDG ARCHITECTS FOR CLARIFICATION. NO WORK SHALL BE PERFORMED OR CONDUCTED WITHOUT THE DISCREPANCIES OR CONFLICTS TO BDG ARCHITECTS PRIOR TO PERFORMING WORK SHALL RESULT IN THE WAIVER OF ANY CLAIMS OR DAMAGES ASSOCIATED WITH THE DISCREPANCIES OR CONFLICTS. THE CONTRACTOR IS RESPONSIBLE FOR THE COORDINATION, SCHEDULING AND CONFIRMANCE OF ITS WORK AND ALL WORK PERFORMED BY SUBCONTRACTORS OR OTHER TRADES WITH THE DESIGN DOCUMENTS.

SEAL

NOT FOR CONSTRUCTION

Architect of Record:
Brian D. Hammond, AIA, LEED, AP
FL License # AR0009919

ISSUE	BY	DATE	DESCRIPTION

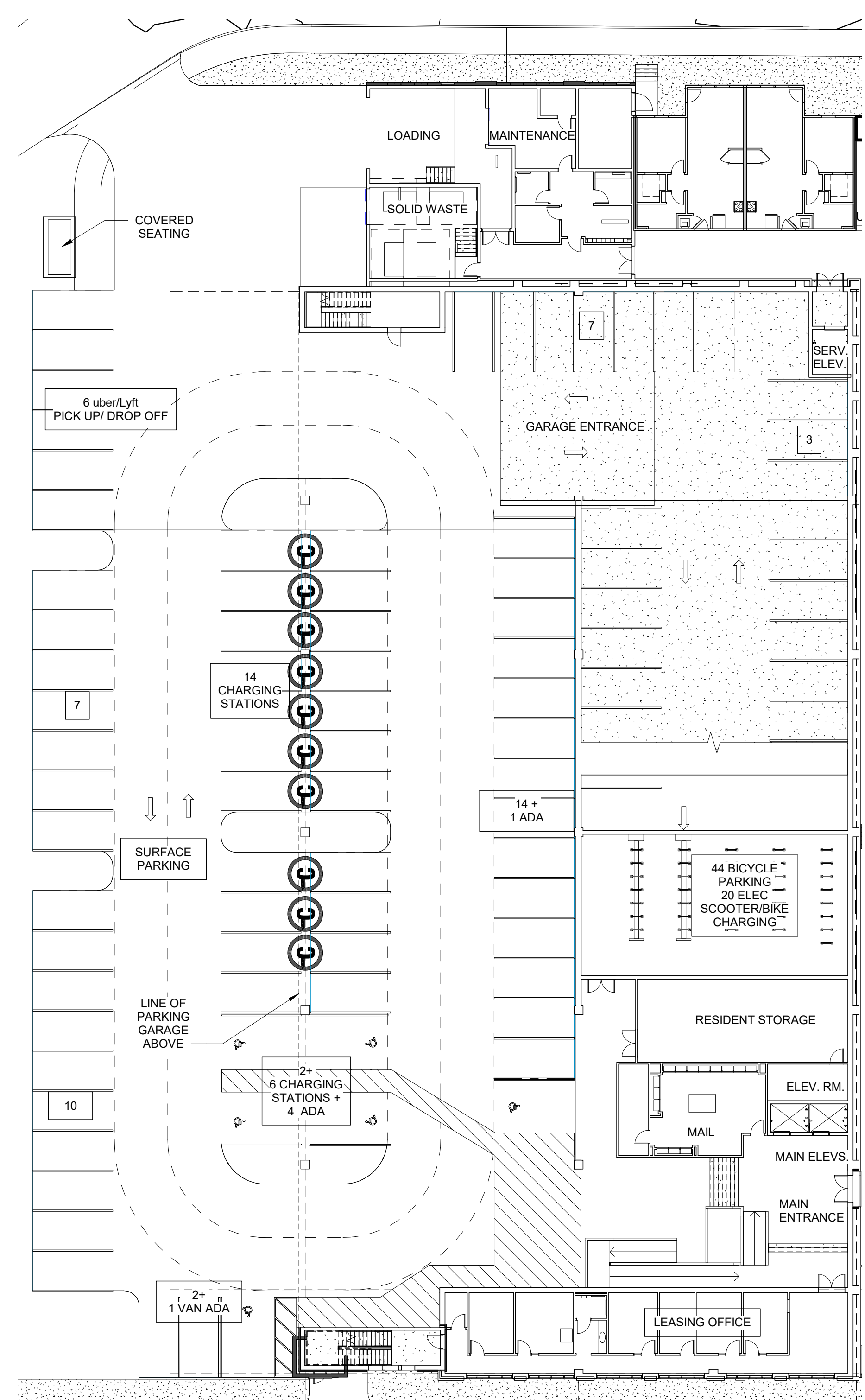
PROJECT INFORMATION BLOCK	
JOB #	Project Number
DATE:	Issue Date
DRAWN BY:	Author
CHECKED BY:	Checker

SHEET TITLE

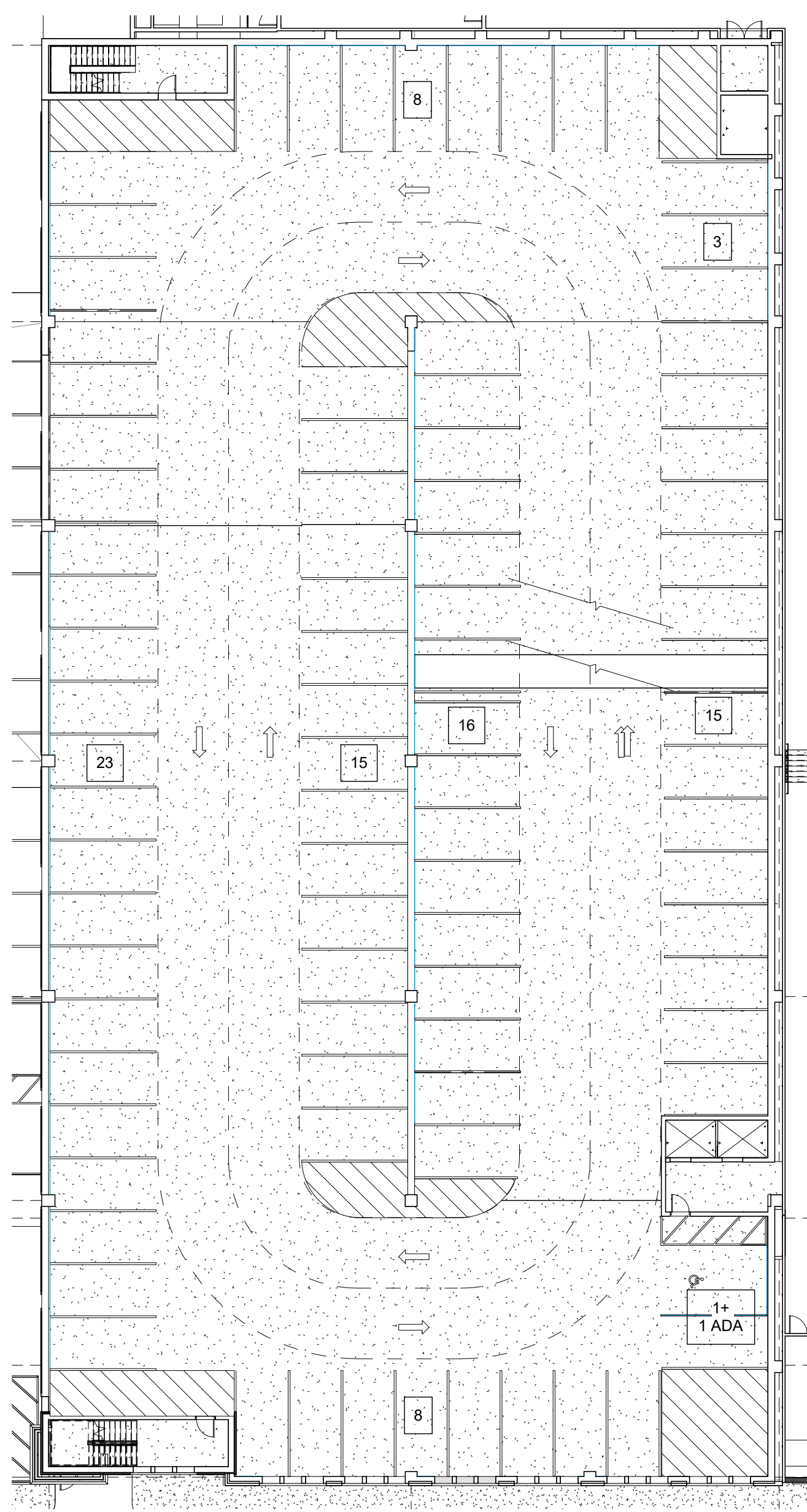
SD ENLARGED PARKING PLANS

SHEET NUMBER

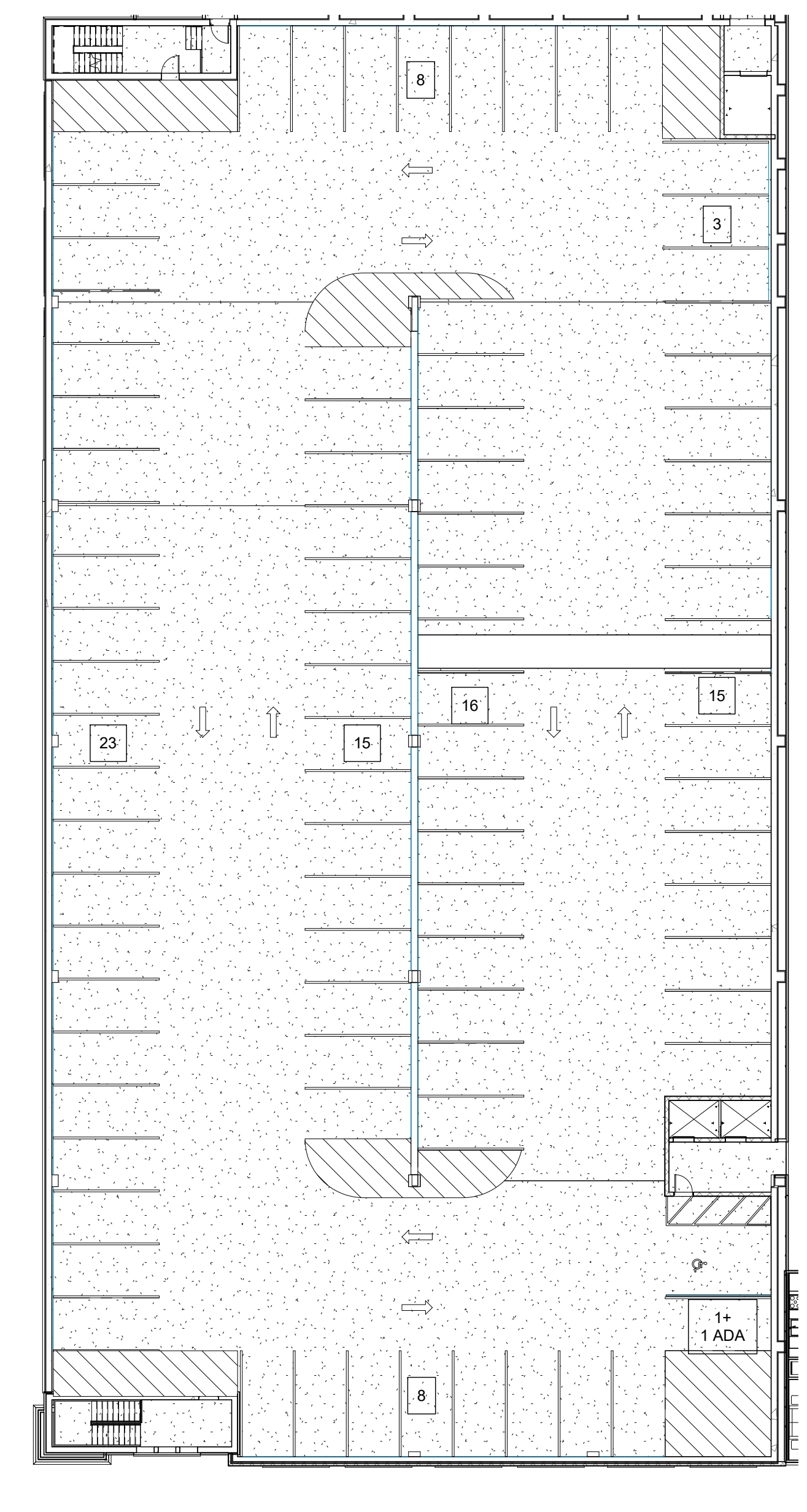
SD300



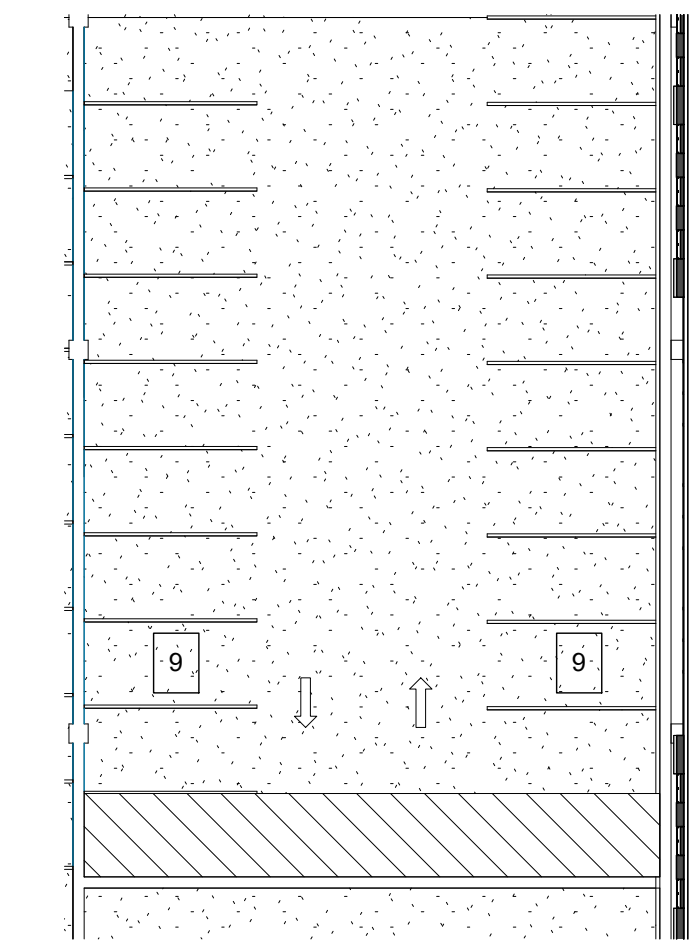
1 SD GROUND FLOOR PARKING PLAN
1" = 20'-0"



2 SD PARKING GARAGE LEVEL 2
1" = 20'-0"



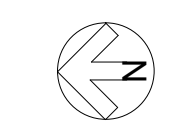
3 SD PARKING GARAGE LEVEL 3
1" = 20'-0"



4 SD PARKING LGARAGE LEVEL 3.5
1" = 20'-0"

PARKING FLOOR	# REG. STALLS	# 12' ADA STALLS	# 9' uber STALLS	# CHARGING STALLS	TOTALS
FLOOR 1 PARKING	45	6	6	20	77
FLOOR 2 PARKING	89	1			90
FLOOR 3 PARKING	89	1			90
FLOOR 3.5 PARKING	18	-			18
TOTALS	241	8	6	20	275

PARKING FLOOR	BICYCLE PARKING	ELEC. SCOOTER/BIKE CHARGING	TOTALS
FLOOR 1 PARKING	44	20	66



**CRA WORKFORCE
HOUSING**
205 SOUTH MARTIN LUTHER KING AVE
CLEARWATER, FL 33609



② SOUTHWEST CORNER AXO
12" = 1'-0"



① MLK PERSPECTIVE OF POOL ENTRANCE
12" = 1'-0"

THESE DRAWINGS AND PLANS, ANY REPRODUCTION THEREOF, AND ANY CAD OR ELECTRONIC FILE OF THESE DRAWINGS AND PLANS (HEREINAFTER "FILES") ARE THE SOLE AND EXCLUSIVE PROPRIETARY PROPERTY OF BDG ARCHITECTS AND MAY NOT BE REPRODUCED, PUBLISHED, INCORPORATED OR USED IN ANY WAY WITHOUT THE EXPRESS WRITTEN PERMISSION OF BDG ARCHITECTS. USE OF THESE PLANS FOR CONSTRUCTION SHALL BE CONSIDERED ACCEPTANCE OF THE TERMS CONTAINED HEREIN AND THE SURETY AND CONTRACTIBILITY OF THE SAME. THE PLANS SHALL NOT BE SCALED OR MODIFIED FOR ANY PURPOSE WITHOUT THE EXPRESS WRITTEN APPROVAL OF BDG ARCHITECTS. ANY CHANGES TO THESE PLANS, REGARDLESS OF HOW MINOR, WITHOUT THE EXPRESS WRITTEN APPROVAL OF BDG ARCHITECTS, MAY CONSTITUTE DEVIATION FROM THESE PLANS WITHOUT THE EXPRESS WRITTEN APPROVAL OF BDG ARCHITECTS, OR ANY CHANGE IN THE SCOPE, SERIAL OR BEST OF THESE PLANS FOR ANY REASON, BY ANY PERSON OTHER THAN BDG ARCHITECTS SHALL AUTOMATICALLY VOID ANY DESIGN-RELATED OBLIGATIONS. BDG ARCHITECTS MAY HAVE ON THE PROJECT, AND RESULT IN THE FULL AND COMPLETE RELEASE OF BDG ARCHITECTS FROM ANY LIABILITY, CLAIMS OR DAMAGES INCLUDING ERRORS AND OMISSIONS ARISING OUT OF OR RELATED TO THE PLANS, ANY DISCREPANCIES OR CONFLICTS IN THE PLANS SHALL BE REFERRED IMMEDIATELY TO BDG ARCHITECTS FOR CLARIFICATION PRIOR TO COMMENCING WITH THE WORK. FAILURE TO REFER DISCREPANCIES OR CONFLICTS TO BDG ARCHITECTS PRIOR TO COMMENCING WORK SHALL RESULT IN THE WAIVER OF ANY CLAIMS OR DAMAGES ASSOCIATED WITH THE DISCREPANCIES OR CONFLICTS. THE CONTRACTOR IS RESPONSIBLE FOR THE COORDINATION, SCHEDULING AND CONFORMANCE OF ITS WORK AND ALL WORK PERFORMED BY SUBCONTRACTORS OR OTHER TRADES WITH THE DESIGN DOCUMENTS.

SEAL

NOT FOR CONSTRUCTION

Architect of Record:
Brian D. Hammond, AIA, LEED, AP
FL License # AR0009919

ISSUE	BY	DATE	DESCRIPTION

PROJECT INFORMATION BLOCK	
JOB #	Project Number
DATE	Issue Date
DRAWN BY:	Author
CHECKED BY:	Checker

SHEET TITLE

SD PERSPECTIVE VIEWS

SHEET NUMBER

SD500